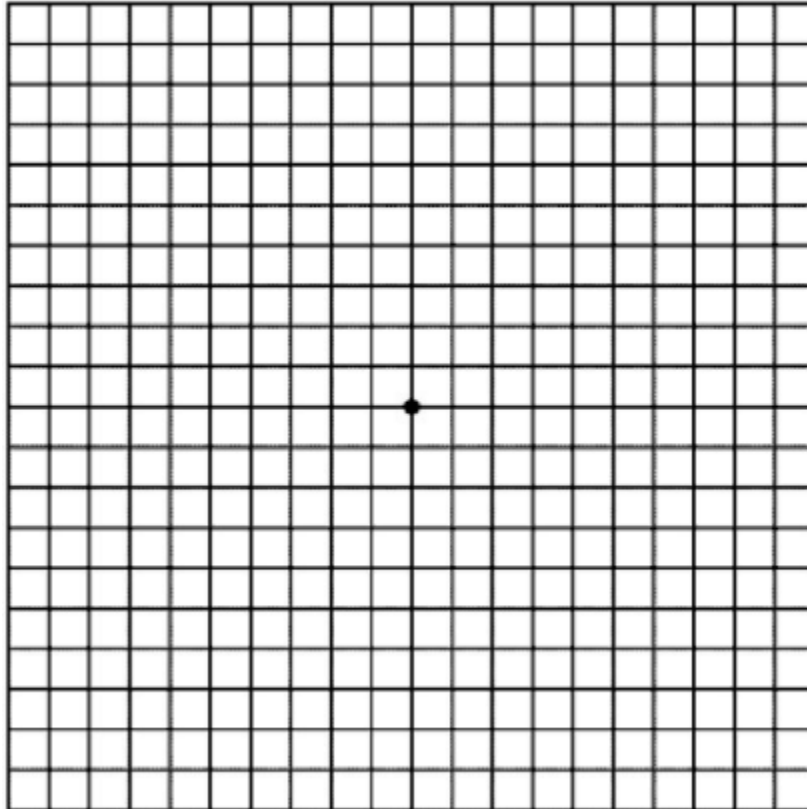


Mohan N. Iyer, M.D. & Victor T. Copeland, M.D.

2705 Jefferson Road

Athens, GA 30607

706-543-3200



- 1. A BRIEF REMINDER: Hold the card 14 inches from your eyes. Wear your glasses if needed for reading.**
- 2. Cover one eye, look at the center dot with the uncovered eye, keep your vision fixated on that dot, note any visual distortion using your side/peripheral vision, then repeat this procedure using your other eye.**
- 3. If the lines look irregular (wavy, blurred, empty, or discolored), promptly call our office.**